



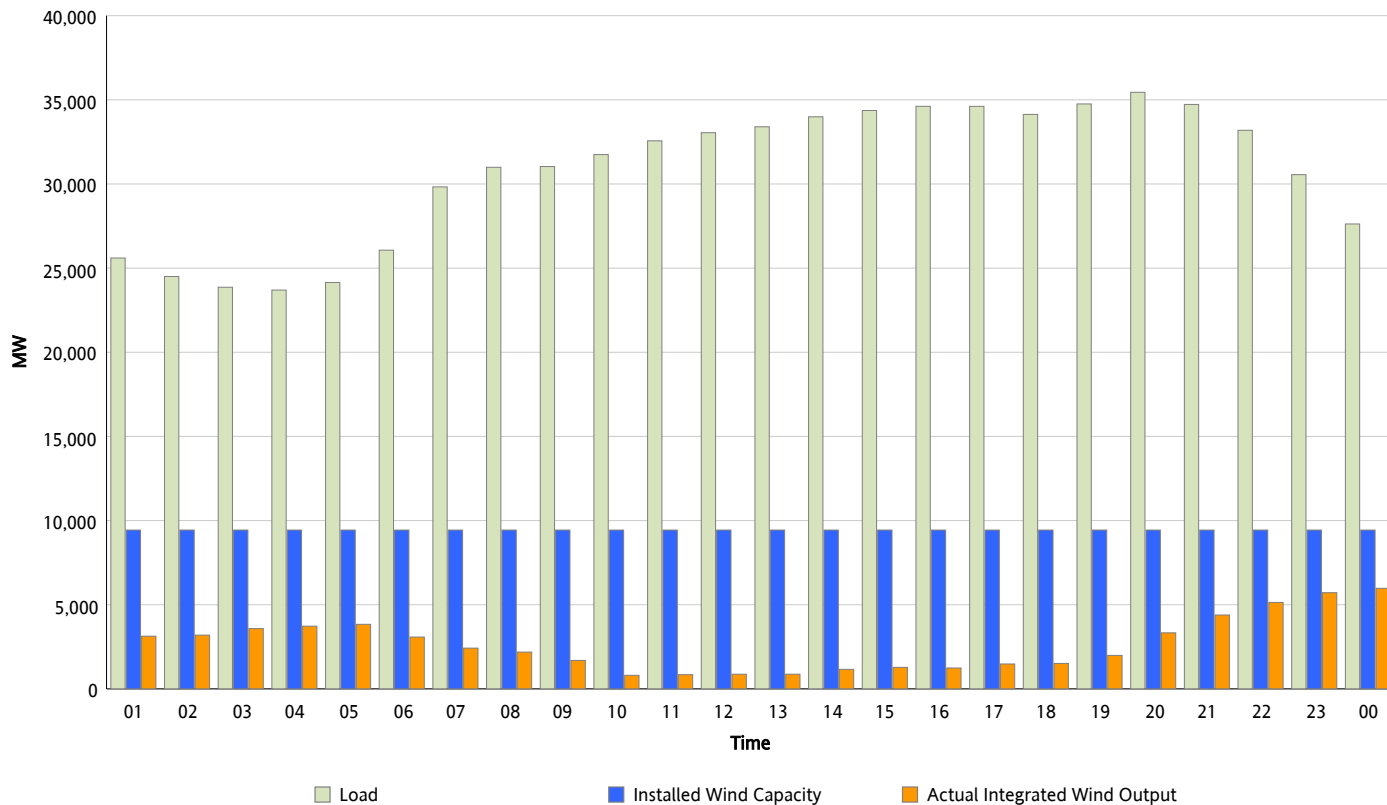
## ERCOT Grid Operations

### Wind Integration Report : 02/29/2012

Peak Load	35,447 MW
Load Peak Hour (HE)	20
Wind Over Peak	3,330 MW
Wind Record 10/07/11	7,400 MW
Max Wind Value*	6,236 MW
Wind Peak Time	23:35
Wind Integration %	22.76 %

#### Hourly Average Actual Load vs. Actual Wind Output

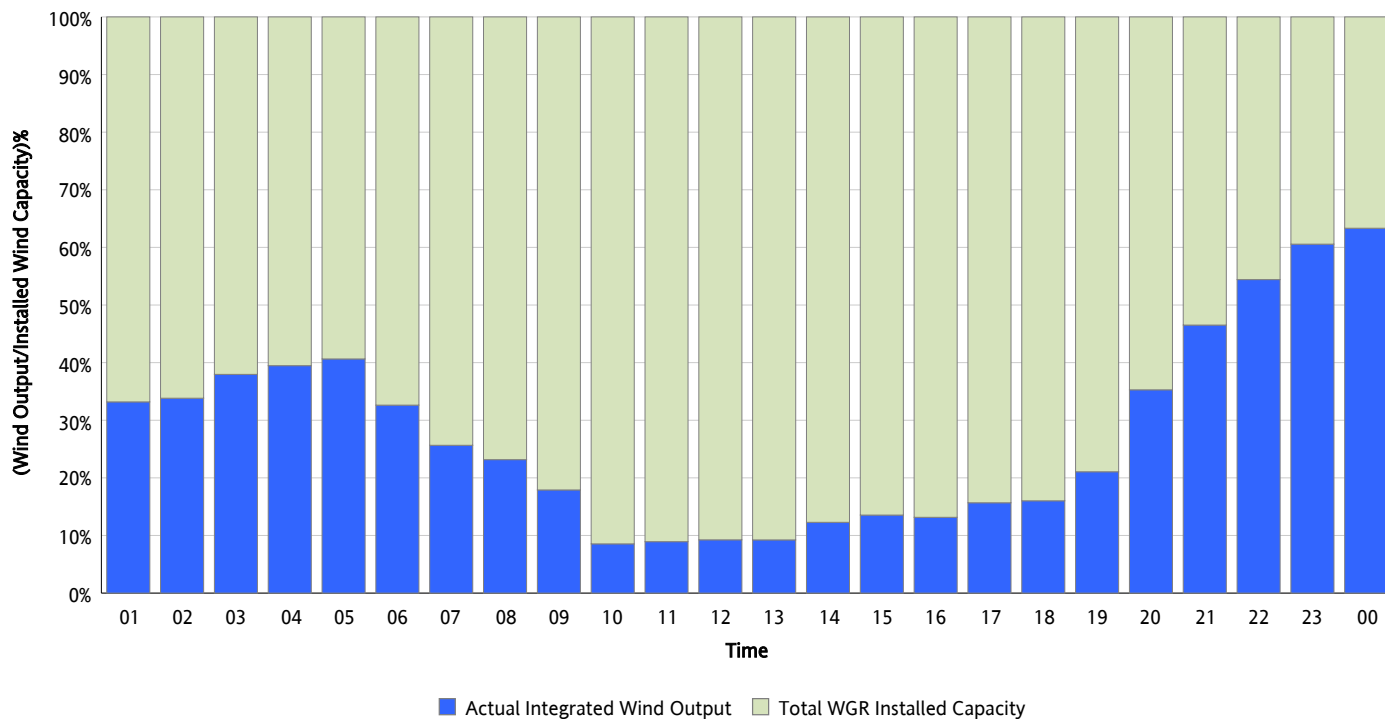
02/29/2012



\* Wind Max represents the instantaneous value and the rest of the values are integrated over the hour

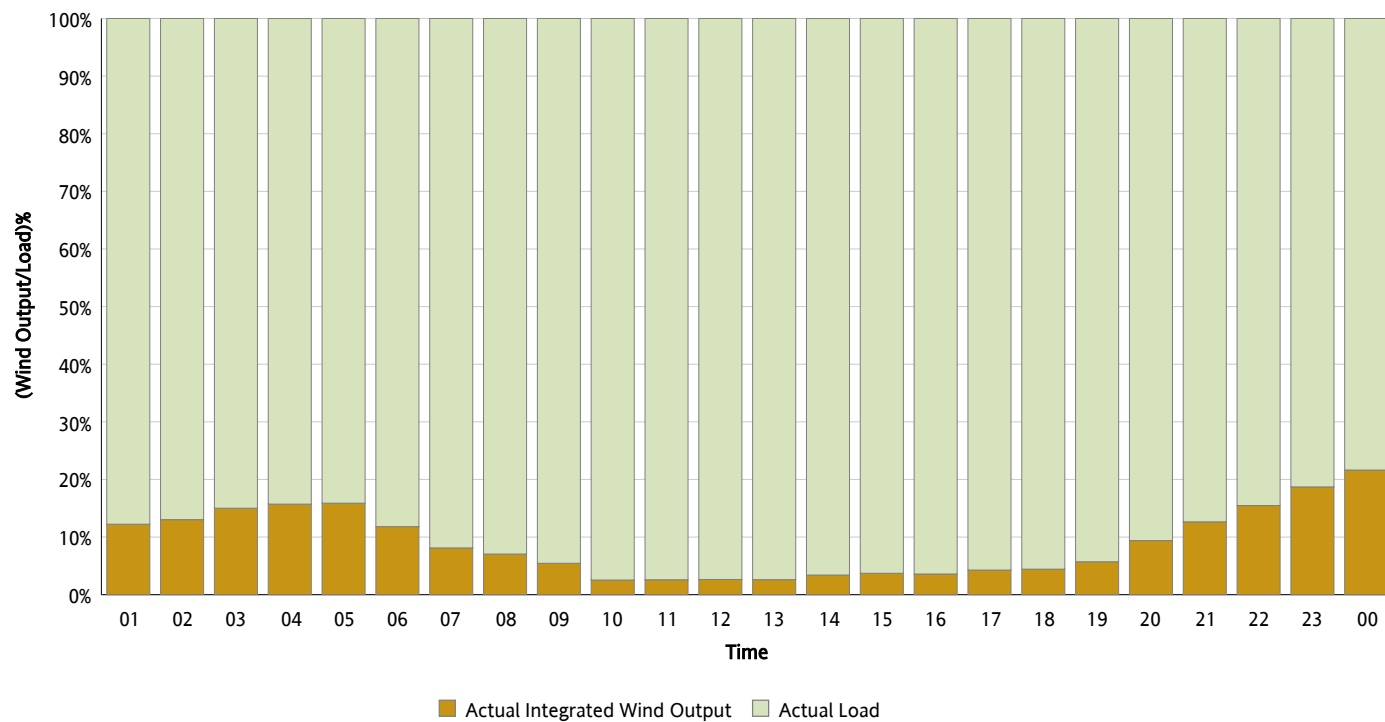
## Actual Wind Output as a Percentage of the Total Installed Wind Capacity

02/29/2012



## Actual Wind Output as a Percentage of the ERCOT Load

02/29/2012



## ERCOT Load vs. Actual Wind Output

02/22/2012 - 02/29/2012

